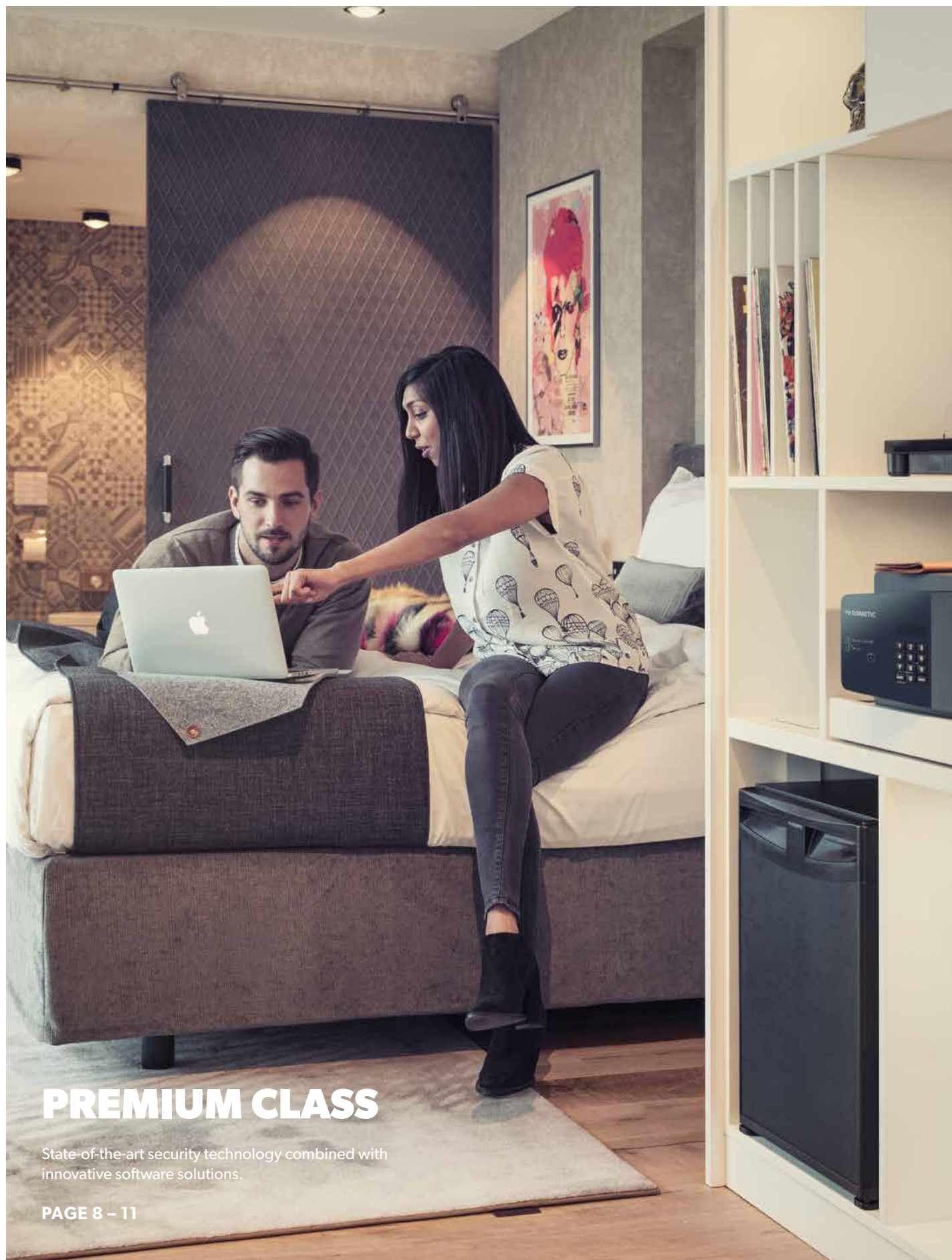


CATALOGUE

PROSAFE AT YOUR SERVICE

PRODUCT OVERVIEW

 **DOMETIC**



PREMIUM CLASS

State-of-the-art security technology combined with innovative software solutions.

PAGE 8 – 11



PREMIUM CLASS

First-class security technology in timeless design.

PAGE 8 – 11



STANDARD CLASS

Excellent value for money ratio and proven Dometic security technology.

PAGE 12 – 19

INTRODUCTION

At your Service	4
About Dometic	5
From Standard to Premium	6
Product finder	7

DOMETIC PREMIUM CLASS

MD 283, MD 363, MD 383, MD 408, MD 493	8 – 11
---	--------

DOMETIC STANDARD CLASS

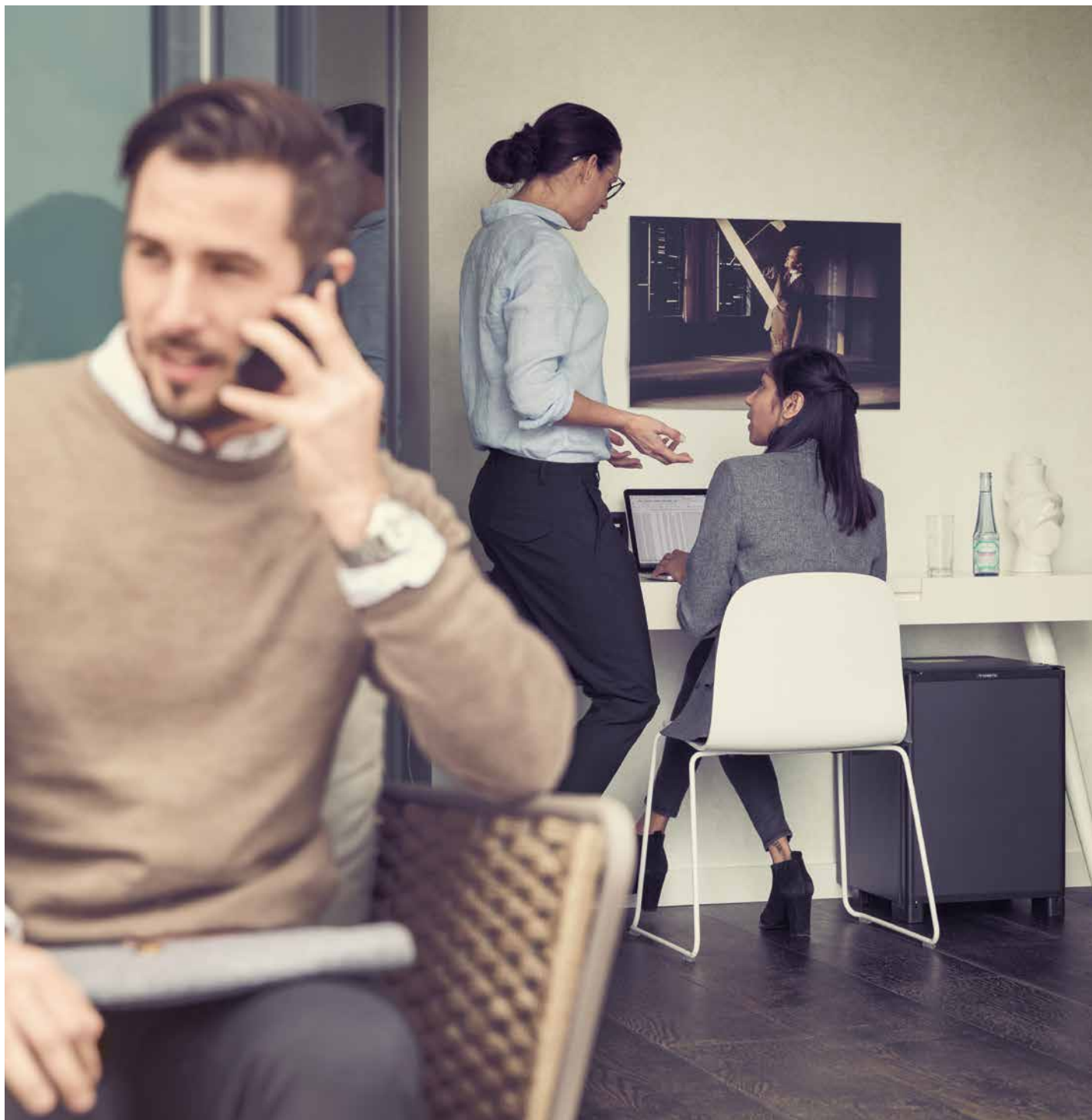
MD 310, MD 390, MD 450	12 – 15
MDT 400 X	16 – 17
MDL 190, MDL 405	18 – 19

Dometic Anti-tampering system	20 – 21
Remote Emergency Opening System	
Premium iAudit	
Product overview	22
Dometic	23

DOMETIC ON THE WEB

Here's where you can find the complete Dometic range, with detailed information about all products. Plus, interesting facts about our company and download links for all our catalogues.

WWW.DOMETIC.COM/HOTEL
WWW.DOMETIC.COM/CARE
WWW.DOMETIC.COM/CRUISELINE



AT YOUR SERVICE.

Individual, discreet and available at any time – service has many faces, but only one aim: generating a special kind of all-round comfort. The possibilities offered by Dometic proSafes make good service even better. They make room for extra comfort and enhance the individual character of the interior.

A proSafe from Dometic never clocks off; it continually offers additional security and protection for your guests' valuables. Always available – 24 hours a day – it offers a protected space for individual

use. Innovative in terms of design and technology, a proSafe provides especially reliable operation. This means guests have the opportunity to use a system that they can always trust. In this way, you create hotel rooms that meet the demand for a protected space supported with proven and reliable quality. For added safety and a fully secured atmosphere of well-being. A demand that Dometic further enhances with its network of partners – over 100 around the globe.

OUR RESPONSIBILITY

SUSTAINABLE AND ENVIRONMENTALLY CONSCIOUS

Protecting and maintaining the environment for generations to come is one of the most important challenges faced by modern society. We want our customers to be able to use our products with the highest levels of comfort and quality – but also with a clear sense of environmental awareness.

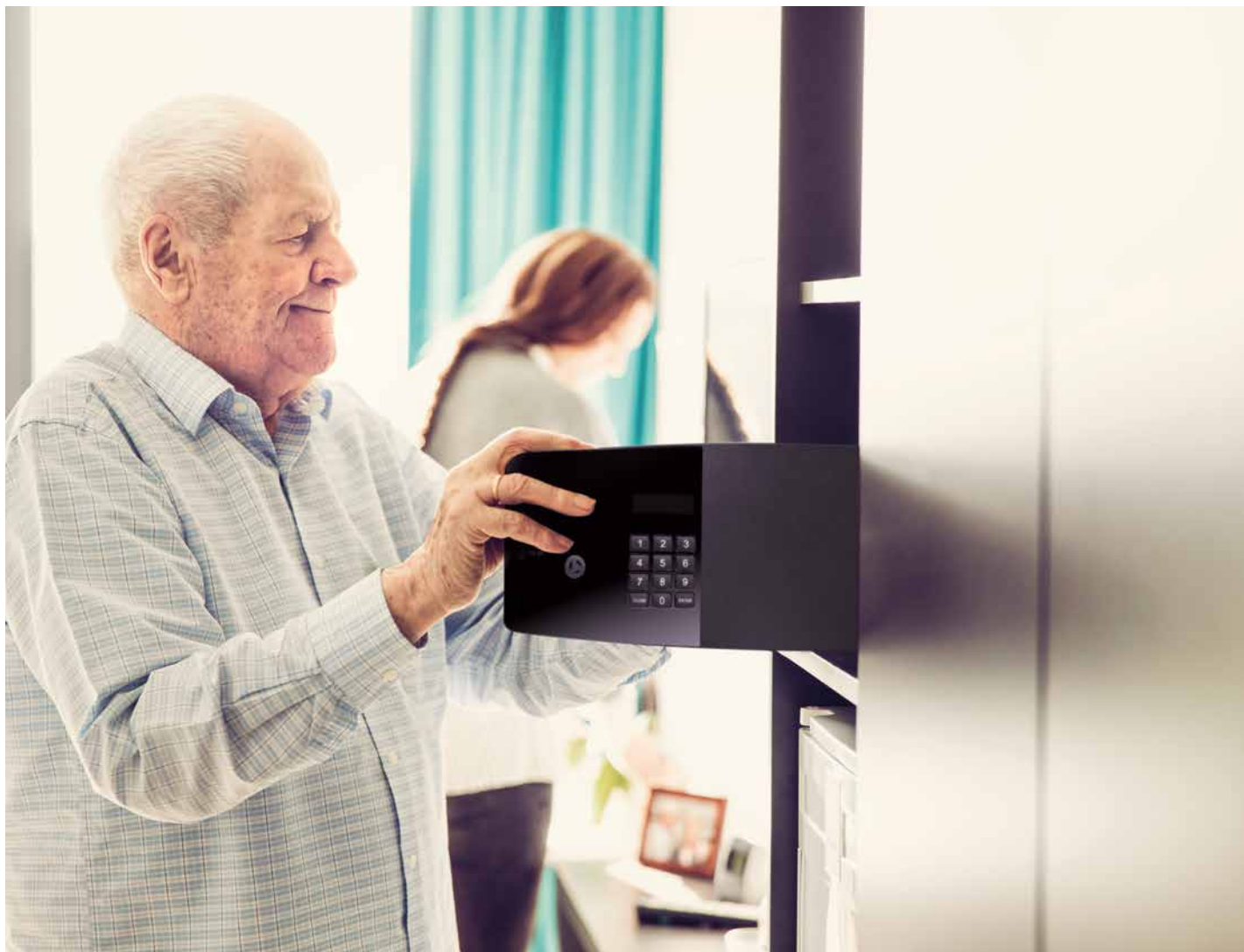
Our environmental work is therefore based on a comprehensive life cycle approach that includes development, production, use and disposal. Other important aspects include legal requirements, customer demands and future trends.

We always strive to minimise our effect on the environment, to optimise our use of resources and to strengthen the environmental awareness of our employees and business partners.

Further information can be found at

WWW.DOMETIC.COM





FROM STANDARD TO PREMIUM

THE RANGE OF DOMETIC PROSAFE MODELS

Security is an essential requirement for hotel guests, and one of the main reasons for choosing or discarding a destination and a hotel. The Dometic GROUP, aware of this, is always developing and improving all of its products in order to meet the needs of customers.

The latest product innovation Dometic has launched is a proSafe range which goes one step further in terms of design, functionality, technology and security. This proSafe range has a very modern design with a colour display, an illuminated keypad, the latest anti-tampering system and a new Web site platform which offers the possibility to operate the safe with the strictest security. The elegant cabinets of the new proSafe generation have rounded corners and edges for enhanced safety.

- Contemporary design
- Master key
- LED interior light
- iAudit system – unique in the industry
- Remote Emergency Opening System (REOS 2.0) – ultimate security and user comfort
- Battery level check

PRODUCT FINDER

THE QUICK WAY TO FIND THE RIGHT PRODUCT

Laser-cut door

Our doors are precisely cut and crafted by a laser beam. This allows us to achieve 100% accuracy in dimensions and an extremely small clearance between the door and casing, making the door impossible to pry open.

Anti-Tamper system

With the anti-tampering system, Dometic offers a unique security feature for their models. All anti-tampering manipulation attempts are recorded in the electronic of the safe and can be tracked back at any time.

REOS code

REOS stands for Dometic's Remote Emergency Opening System. The emergency-opening system from Dometic is based on an innovative encoding system. The unique solution combines advanced electronics with state-of-the-art online technology to allow simple yet highly secure emergency opening by authorised hotel staff.

Premium iAudit

All operations effected on a safe must be documented – for your own security and for your insurance provider. This is where Dometic's Premium iAudit system offers a truly convenient solution: the integrated microchip provides storage capacity for the last 1,000 events.

SAM

The unique Dometic safe management system (SAM) allows for iAudit Trail and one time emergency code generation (REOS) from a user friendly but PIN secured internet based software tool.

WHAT'S IMPORTANT TO YOU?	PREMIUM CLASS	STANDARD CLASS
Easy operation	●	●
Motorised opening	●	●
LED interior light	●	●
LED display	●	●
Emerg. opening with master key	●	●
Emerg. opening with master code	●	●
Emerg. opening with REOS Code	○	–
Anti-Tamper System	○	–
Premium iAudit	●	–
SAM	○	–
Laser-cut door	●	–
From Page	8	12

● Yes / – No / ○ Optional





THE PREMIUM CLASS FROM DOMETIC

**SAFE TO SAY IT'S MORE CONVENIENT
HIGHEST SECURITY // EXCELLENT DESIGN // INNOVATIVE**

Protection for more privacy – comfortably and with absolute reliability. With a Premium Class proSafe, a hotel room becomes a perfectly private haven for the guest. A safe place for storage, conceived and implemented according to the newest standards. Its innovative and customisable design suits every hotel in a stylish way. Smooth surfaces and rounded edges make it easy to look after and give it long-lasting character. A colour display and the integrated soft-touch keypad make operation easy. And a Premium Class proSafe also breaks new ground when it comes to protective properties: pioneering technology like the unique iAudit and the anti-tampering system ensure security on all levels. The demand for contemporary security systems with added convenience is supported by special features such as REOS 2.0 software with its emergency code-opening system.

- LED interior light
- Laser-cut door and frame
- iAudit
- Emergency opening with key and master code
- Manufactured in Dometic factory



PROSAFE PREMIUM PRODUCT OVERVIEW			
			
MODEL	MD 283	MD 363	MD 383
Type of product	Electronic safe		
Capacity (litres)	8.2	24	28
Exterior dimensions (H × W × D, mm)	165 × 280 × 235	190 × 360 × 410	190 × 380 × 450
Interior dimensions (H × W × D, mm)	162 × 277 × 185	187 × 357 × 360	187 × 377 × 400
Steel thickness (mm)	Door: 5.0 / Body 1.2	Door: 5.0 / Body 1.5	Door: 5.0 / Body 1.5
Net weight (kg)	6.1	10	11.3
Keypad	ADA-compliant rubber keypad		
Display	LED colour display; 4-digit guest code; English language		
Locking mechanism	Two 18 mm solid steel bolts		
Locking system	Motorised with automatic opening		
Power	4 LR6/AA 1.5 V batteries (incl.)		
Cabinet colour	Anthracite		
FEATURES			
LED interior light	●	●	●
Batteries included	●	●	●
iAudit	●	●	●
Laser cut technology	●	●	●
Masterkey opening	●	●	●
Mastercode opening	●	●	●
OPTIONS			
(available for all models)	<ul style="list-style-type: none">• Left-handed hinge door opening• Custom colour (cabinet and front panel)• Two step emergency code opening (REOS)• Integrated socket (EU, US, UK, FR)• Fixing kit• Rental system software• Handle• Anti-tampering system – back cover• Languages display (standard: English): ES, FR, DE, SE, PT• 120–240 V mains operation		

**PROSAFE PREMIUM
PRODUCT OVERVIEW**



MD 408



MD 493

MODEL

Type of product	Electronic safe	
Capacity (litres)	22.5	29
Exterior dimensions (H × W × D, mm)	190 × 405 × 350	190 × 490 × 370
Interior dimensions (H × W × D, mm)	187 × 402 × 300	187 × 487 × 320
Steel thickness (mm)	Door: 5.0 / Body 1.5	Door: 5.0 / Body 1.5
Net weight (kg)	10.4	12.2
Keypad	ADA-compliant rubber keypad	
Display	LED colour display; 4-digit guest code; English language	
Locking mechanism	Two 18 mm solid steel bolts	
Locking system	Motorised with automatic opening	
Power	4 LR6/AA 1.5 V batteries (incl.)	
Cabinet colour	Anthracite	

FEATURES

LED interior light	•	•
Batteries included	•	•
iAudit	•	•
Laser cut technology	•	•
Masterkey opening	•	•
Mastercode opening	•	•

OPTIONS

(available for all models)

- Left-handed hinge door opening
- Custom colour (cabinet and front panel)
- Two step emergency code opening (REOS)
- Integrated socket (EU, US, UK, FR)
- Fixing kit
- Rental system software
- Handle
- Anti-tampering system – back cover
- Languages display (standard: English): ES, FR, DE, SE, PT
- 120–240 V mains operation

**FEATURES
PREMIUM CLASS**

- Laser cut technology
- LED interior light
- Master key and master code emergency opening
- iAudit
- Batteries included





STANDARD CLASS

MDL 190



MDT 400X



MD 450

THE STANDARD CLASS BY DOMETIC

ECONOMICAL // SIMPLEST TO USE // RELIABLE

It puts hotel guests' mind at rest to have a safe place for their valuables while travelling. Providing a secure space for important or valuable objects doesn't have to be cost-intensive, yet it is a distinctive feature when choosing a hotel room or suite. With a Standard Class proSafe, you can create a reliable spot in a guest room that is worth every penny. Security and functionality are paramount with all Dometic safe models. The Standard Class safe models offer your guests a high level of security thanks to their robust construction. Their simple and intuitive operability provides perfect comfort and convenience.

- Robust and reliable
- LED Display
- LED interior light
- Master key and master code emergency opening
- **NEW:** Vertical 13" safe for Budget Design Hotels

DOMETIC PROSAFE MD 310 - 390 - 450 VALUE FOR MONEY




Guests wish to leave their valuables in a safe place while staying in a hotel so they can enjoy their time – and feel at ease. It is understandable, then, that the disposal of a safe is an important criterion for tourists, businessmen and any other travellers when choosing a hotel room. Hotel owners' budgets tend to be limited, however, and investment costs need to be tightly calculated. This is where the Dometic proSafe MD Series provides the perfect answer. Featuring well-proven Dometic reliability and quality, the safes of this series provide genuine value for money without compromising on security, comfort or convenience. They are easy to use, intuitive to operate and part of the Standard Class safe range. Features include

master key opening in case of emergency and LED interior light as standard. The Dometic proSafe MD Series comprises a full line-up of safes from compact versions right up to 17" laptop size.

- LED interior light
- Robust construction
- Intuitive to operate
- Dometic reliability and quality
- Master key opening in case of emergency



PROSAFE STANDARD PRODUCT OVERVIEW			
MODEL	 MD 310	 MD 390	 MD 450
Type of product	Electronic safe		
Capacity (litres)	9	31.5	30.4
Exterior dimensions (H × W × D, mm)	165 × 310 × 245	200 × 390 × 480	200 × 450 × 410
Interior dimensions (H × W × D, mm)	161 × 306 × 182	196 × 386 × 418	196 × 446 × 348
Steel thickness (mm)	Door: 5.0 / Body 2	Door: 5.0 / Body 2	Door: 5.0 / Body 2
Net weight (kg)	7.7	14.3	14.5
Keypad	Rubber keypad		
Display	LED 4-digit guest code		
Locking mechanism	Two 19mm steel bolts		
Locking system	Motorised with automatic opening		
Power	4 LR6/AA 1.5 V batteries (incl.)		
Cabinet colour	Anthracite		
FEATURES			
Confirmation buzzer	●	●	●
LED interior light	●	●	●
Masterkey opening	●	●	●
Mastercode opening	●	●	●
OPTIONS			
(available for all models)	<ul style="list-style-type: none">• Left-handed hinge door opening• Fixing kit		


DOMETIC PROSAFE MDT TOP-OPENING SAFE



Allocating a secure place for hotel guests' valuables is important, as travellers appreciate not having to worry about important and precious possessions. Providing this kind of security does not have to be cost-intensive though. Part of the Dometic Standard Class range, the Dometic proSafe MDT 400 X top-opening safe provides a simple, yet ingenious solution that is easy to operate and safe to use. The top-opening drawer safe can be integrated in an existing furniture drawer and provides easy access to guests' valuables. At the same time it meets the highest demands on ergonomic design, comfort and security with an LED inside light for standard, master key and master code opening possibility in case of emergency, digital LED illuminated keypad, four-digit code and top-opening stabilizer arm. An audio signal confirms that the safe is securely locked.

- Top-opening safe that can be integrated in existing furniture drawers
- LED display
- LED interior light
- Master key and master code emergency opening
- Easy to operate, safe to use



PROSAFE STANDARD PRODUCT OVERVIEW	
MODEL	MDT 400X
Type of product	
Capacity (litres)	9.7
Exterior dimensions (H x W x D, mm)	130 x 400 x 350
Interior dimensions (H x W x D, mm)	75 x 380 x 300
Steel thickness (mm)	Door: 3.0 / Body 1.5
Net weight (kg)	9
Keypad	Rubber keypad
Display	LED 4-digit guest code
Locking mechanism	Two 19mm steel bolts
Locking system	Motorised with automatic opening
Power	4 LR6/AA 1.5 V batteries (incl.)
Cabinet colour	Anthracite
FEATURES	
Confirmation buzzer	●
LED interior light	●
Masterkey opening	●
Mastercode opening	●
OPTIONS	
	<ul style="list-style-type: none"> Fixing kit



The Dometic proSafe MDT 400 X top-opening safe provides a simple, yet ingenious solution that is easy to operate and safe to use



DOMETIC PROSAFE MDL CABINET SAFES



MDL 190

MDL 405

Being able to store their valuables securely makes hotel guests feel safe while travelling. Dometic proSafe MDL cabinet safes provide this kind of safety – also where compact hotel rooms are concerned. The vertical design of the Dometic Dometic proSafe MDL 190 permits space-saving installation inside a cabinet. Available in white and anthracite black, this safe is ideal for design-inspired hotels wishing to provide their guests with full security while not straining their budgets. Compact inside and out, the safe will accommodate a 13" laptop or tablet. Features include master key and master code emergency opening in case a guest has forgotten his code.

Hotel owners wishing to upgrade their premises tend to be faced with limited funds. This is where the Dometic proSafe MDL 405 comes in. This value-for-money in-room safe is ideal for installation at a later date and greatly enhances the security of existing hotel rooms. Its operation is simple and safe, and hotel guests appreciate the added safety and convenience. Both models are part of the

Dometic Standard Class safe range and have been made in Europe, in Dometic-owned and -operated factories.

- Compact design
- LED display
- Master key and master code emergency opening
- Value-for-money solutions
- Easy to operate, safe to use

PROSAFE STANDARD PRODUCT OVERVIEW		
MODEL	 MDL 405	 MDL 190
Type of product	Electronic safe	
Capacity (litres)	18.4	18.4
Exterior dimensions (H × W × D, mm)	190 x 405 x 300	405 x 190 x 300
Interior dimensions (H × W × D, mm)	187 x 402 x 245	402 x 187 x 245
Steel thickness (mm)	Door: 4.0 / Body 1.5	
Net weight (kg)	10	
Keypad	Rubber keypad	
Display	LED 4-digit guest code	
Locking mechanism	Two 18 mm solid steel bolts	
Locking system	Motorised	
Power	4 LR6/AA 1.5 V batteries (incl.)	
Cabinet colour	Anthracite	
FEATURES		
Door handle opening	●	●
Batteries included	●	●
Master key opening	●	●
Master code opening	●	●
OPTIONS		
(available for all models)	<ul style="list-style-type: none">• Left-handed hinge• Fixing kit• White cabinet colour	



REMOTE EMERGENCY OPENING SYSTEM HIGH-SECURITY FEATURES AND PROSAFE SPECIALS

Dometic offers three emergency-opening options.

Option 1: Authorised staff open the safe with a master key.

Option 2: Authorised staff enter a master code to open the safe.

After ten seconds the safe will open automatically.

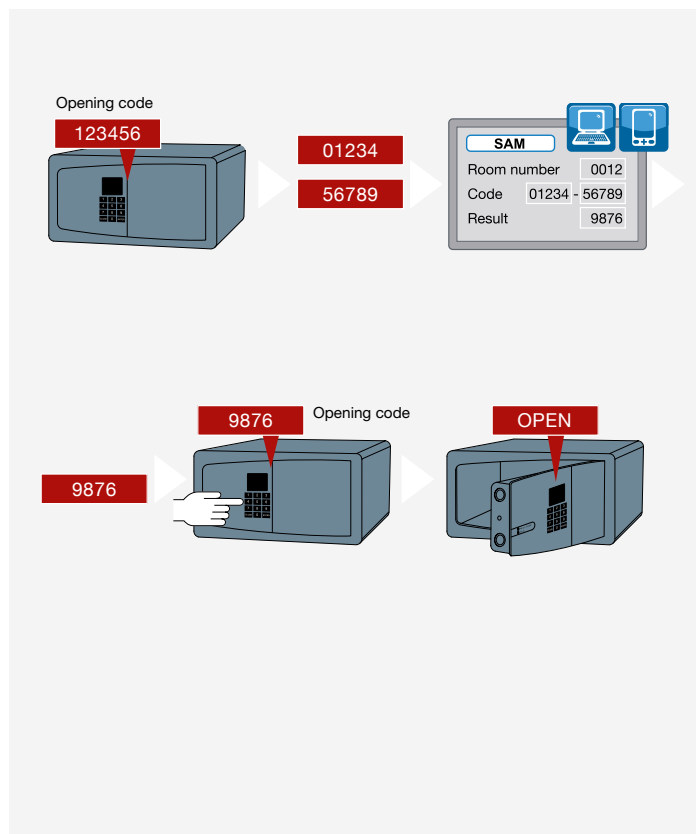
Option 3: The REOS system, designed for ultimate security and user comfort.

REOS – takes hotel safe security to a higher level

The Dometic Remote Emergency Opening System is based on an innovative encryption system. This unique solution combines the advanced electronic system integrated in all proSafe Premium models with the latest online technology. In case of emergency, an authorised staff member enters the REOS code on the safe's keypad. As a result, the safe generates a ten-digit code to be entered on a password-protected Web page. The screen finally shows the emergency access code which can be used to open the safe. Each REOS opening is recorded and stored on a protected server.

REOS – convenient data entry by mobile phone

Latest generation REOS software saves time for hotel guests and staff members. The ten-digit code, generated by the safe upon entry of the master code can now optionally be keyed in by mobile phone on the password-protected Web page. Another smart Dometic solution for enhanced service quality.



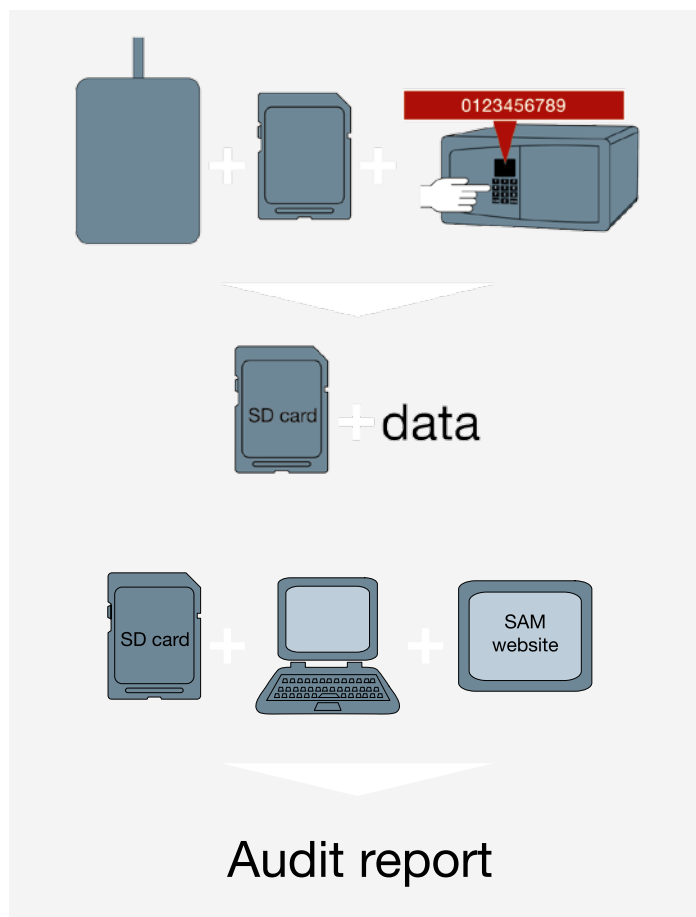
iAUDIT

THE DIGITAL MEMORY FOR iAUDIT TRAILS

All safe operations must be documented – for your own security and for your insurance provider. This is where Dometic's iAudit system offers a truly convenient solution.

All Premium prosafe models feature a special microchip with storage capacity for the last 1,000 events. That means: any operation (locking, unlocking, emergency-opening requests, etc.) can be tracked and iAudited at any time – even over a number of years. The information is transferred from the safe to a protected server via the Dometic SD card device, which works with common SD cards.

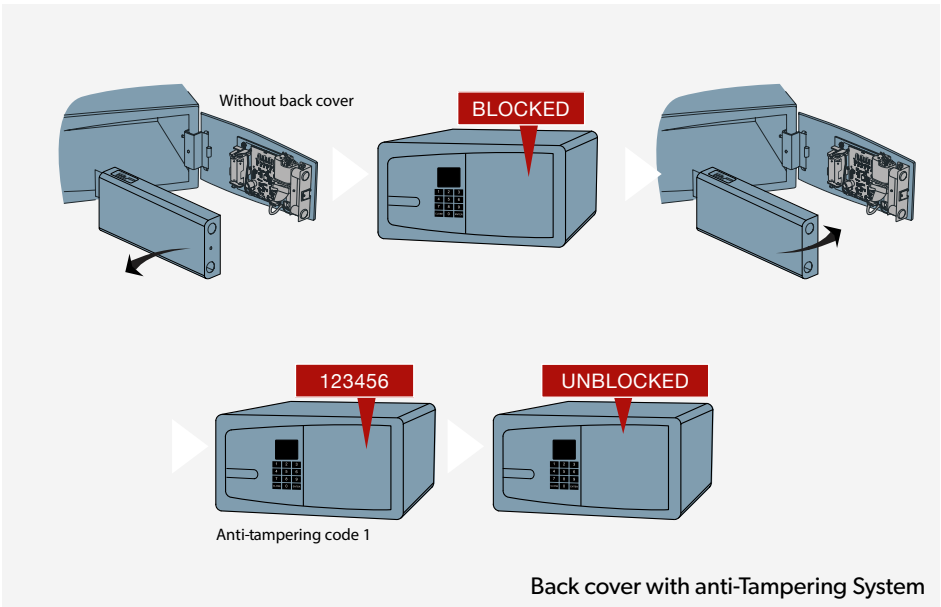
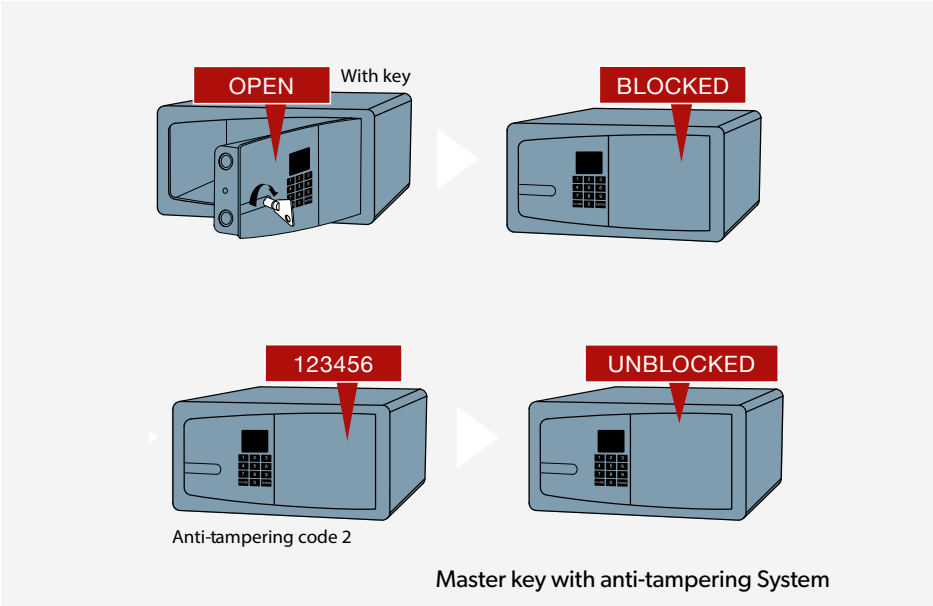
All proSafe MD models from the Advanced and Premium range have a matching interface for connection to the SD card reader. The iAudit protocol can be printed out at any time, simply by using your PC's printer. This avoids the need for special iAudit trail printers.



DOMETIC ANTI-TAMPERING SYSTEM
THE QUALITY BENCHMARK FOR HOTEL
SAFE SECURITY

While hotel guests around the world expect efficient and secure service to store their valuables in their own hotel rooms, hotel managers demand cutting-edge technology to guarantee smooth and reliable in-room safe operation. The latest Dometic proSafe Premium models offer state-of-the-art solutions for every demand. With the Anti-tampering system, Dometic provides an unparalleled security feature for it's proSafe models.

The anti-tampering system reports to the hotel any tampering attempt performed on the safe at any given time of day or night. The state-of-the-art security concept will even better protect the guests' valuables. Integrated in a sturdy cabinet with 18 mm steel pivots, it leaves no point of attack for thieves and burglars. Dometic strives to support your hotel's most thorough security standards and guarantee your guests the greatest possible comfort away from home.



Audit Dometic			
Nº Audit:	1619		
Date GTM:	29/06/2012		
Time GTM:	14:07:29		
Safe Date:	29/06/2012 0:00:00		
Safe Time:	13:30		
Company:	Dometic Girona		
Location:	Girona		
Room Number:	1234		
Requested by:	Nuria Bergada		
Nº product:	958480610		
Nº Serial:	222000560		
Total Audit operations:	57		
Total print operations:	50		

Last 5 emergency operations			
Emergency date	Emergency time	Emergency operation	
26/06/2012	09:45	Master code opening	
26/06/2012	09:44	Master code opening	
22/06/2012	10:07	Open and close with key	
22/06/2012	09:58	Open and close with key	
22/06/2012	09:52	Open and close with key	

Movements of the box			
Normal date	Normal time	Normal operation	Operation
21/06/2012	12:17	Opening OK	Opening OK
21/06/2012	12:14	Closing OK	Closing OK
21/06/2012	12:14	Reprogram safe	Reprogram safe
21/06/2012	12:13	Opening OK	Opening OK
21/06/2012	12:13	Closing OK	Closing OK
21/06/2012	12:13	Reprogram safe	Reprogram safe
21/06/2012	12:12	Master code opening	Master code opening
21/06/2012	12:12	Wrong code	Wrong code
21/06/2012	12:12	Change of master code	Change of master code
21/06/2012	12:11	Closing OK	Closing OK
21/06/2012	12:11	Master code opening	Master code opening
21/06/2012	12:11	Wrong code	Wrong code
21/06/2012	12:11	Wrong code	Wrong code
21/06/2012	12:11	Change of master code	Change of master code
21/06/2012	12:10	Closing OK	Closing OK



PRODUCT OVERVIEW

PRODUCT LINE/ MODEL	CAPACITY LITRES	EXTERIOR DIMENSIONS (H × W × D, MM)	INTERIOR DIMENSIONS (H × W × D, MM)	NET WEIGHT (KG)	STEEL THICKNESS (MM) (ALL DOORS: 5.0)	LOCKING MECHANISM
PREMIUM CLASS						
MD 283	8.2	165 × 280 × 235	162 × 277 × 185	6.1	Door: 5.0 / Body 1.2	Two 18 mm solid steel bolts
MD 363	24	190 × 360 × 410	187 × 357 × 360	10	Door: 5.0 / Body 1.5	
MD 383	28	190 × 380 × 450	187 × 377 × 400	11.3		
MD 408	22.5	190 × 405 × 350	187 × 402 × 300	10.4		
MD 493	29	190 × 490 × 370	187 × 487 × 320	12.2		
STANDARD CLASS						
MD 310	9	165 × 310 × 245	161 × 306 × 182	7.7	Door: 5.0 / Body 2	Two 19 mm solid steel bolts
MD 390	31.5	200 × 390 × 480	196 × 386 × 418	14.3		
MD 450	30.4	200 × 450 × 410	196 × 446 × 348	14.5		
MDT 400X	9.7	130 × 400 × 350	75 × 380 × 300	9		
MDL 190	18.4	405 × 190 × 300	402 × 187 × 245	10	Door: 4.0 / Body 1.5	Two 18 mm solid steel bolts
MDL 405	18.4	190 × 405 × 300	187 × 402 × 245	10		

PRODUCT LINE/ MODEL	LAPTOP SIZE	iAUDIT	REOS	ANTI-TAMPERING SYSTEM	LED INT. LIGHT	LED DISPLAY	MASTER KEY & CODE OPENING
PREMIUM CLASS							
MD 283	–	●	○	○	●	●	●
MD 363	15"	●	○	○	●	●	●
MD 383	17"	●	○	○	●	●	●
MD 408	15"	●	○	○	●	●	●
MD 493	17"	●	○	○	●	●	●
STANDARD CLASS							
MD 310	–	–	–	–	●	●	●
MD 390	17"	–	–	–	●	●	●
MD 450	15"	–	–	–	●	●	●
MDT 400X	15"	–	–	–	●	●	●
MDL 190	13"	○	○	–	–	●	●
MDL 405	13"	○	○	–	–	●	●

● Yes / – No / ○ Optional



Dometic is a global company that makes mobile living easy – by providing great solutions to satisfy people's essential needs when they are on the move. Like cooking, taking care of personal hygiene and maintaining a pleasant temperature. We offer smart and reliable products with outstanding design.



BELGIUM

DOMETIC BRANCH OFFICE BELGIUM

Zinkstraat 13
B-1500 Halle
Tel +32 2 3598040
Fax +32 2 3598050
Mail info@dometic.be

DENMARK

DOMETIC DENMARK A/S

Nordensvej 15, Taulov
DK-7000 Fredericia
Tel +45 75585966
Fax +45 75586307
Mail info@dometic.dk

EASTERN EUROPE

DOMETIC AB

Hemvärnsgatan 15
SE-171 54 Solna
Tel +46 (0)8 501 02 500
Mail lodging.export@dometic.com

FINLAND

DOMETIC FINLAND OY

Mestarinäntie 4
FIN-01730 Vantaa
Tel +358 20 7413220
Fax +358 9 7593700
Mail info@dometic.fi

FRANCE

DOMETIC SAS

ZA du Pré de la Dame Jeanne
B.P. 5
F-60128 Plailly
Tel +33 3 44633525
Fax +33 3 44633518
Mail lodging@dometic.fr

GERMANY & AUSTRIA

DOMETIC GMBH

In der Steinwiese 16
D-57074 Siegen
Tel +49(0) 271 692 0
Fax +49 (0) 271 692 302
Mail info@dometic.de

HUNGARY

DOMETIC ZRT. SALES OFFICE

H-1147 Budapest
Kerékgyártó u. 5.
Tel +36 1 468 4400
Fax +36 1 468 4401
Mail budapest@dometic.hu

ITALY

DOMETIC ITALY S.R.L.

Via Virgilio, 3
I-47122 Forlì (FC)
Tel +39 0543 754901
Fax +39 0543 754983
Mail vendite@dometic.it

NETHERLANDS

DOMETIC BENELUX B.V.

Ecustraet 3
NL-4879 NP Etten-Leur
Tel +31 76 5029000
Fax +31 76 5029019
Mail info@dometic.nl

NORWAY

DOMETIC NORWAY AS

Østerøyveien 46
N-3236 Sandefjord
Tel +47 33428450
Fax +47 33428459
Mail firmapost@dometic.no

POLAND

DOMETIC POLAND SP. Z O.O

ul. Puławska 435A
PL-02-801 Warszawa
Tel +48 22 414 3200
Fax +48 22 414 3201
Mail info@dometic.pl

PORTUGAL

DOMETIC SPAIN, S.L.

Branch Office em Portugal
Rot. de São Gonçalo nº 1– Esc. 12
2775-399 Carcavelos
Tel +351 219 244 173
Fax +351 219 243 206
Mail info@dometic.pt

RUSSIA

DOMETIC RUS LLC

Komsomolskaya square 6 – 1
RU-107140 Moscow
Tel +7 495 780 79 39
Fax +7 495 916 56 53
Mail info@dometic.ru

SPAIN

DOMETIC SPAIN S.L.

Avda. Sierra del Guadarrama, 16
E-28691 Villanueva de la Cañada
Madrid
Tel +34 91 833 6089
Fax +34 900 100 245
Mail info@dometic.es

SWEDEN

DOMETIC SCANDINAVIA AB

Gustaf Melins gata 7
S-421 31 Västra Frölunda
Tel +46 31 7341100
Fax +46 31 7341101
Mail info@dometic.se

SWITZERLAND

DOMETIC SWITZERLAND AG

Riedackerstrasse 7a
CH-8153 Rümlang
Tel +41 44 8187171
Fax +41 44 8187191
Mail info@dometic.ch

MENA

DOMETIC MIDDLE EAST FZCO

P.O. Box 17860
S-D 6, Jebel Ali Freezone
Dubai
Tel +971 4 883 3858
Fax +971 4 883 3868
Mail info@dometic.ae

UNITED KINGDOM

DOMETIC UK LTD.

Dometic House, The Brewery,
Blandford St. Mary
Dorset DT11 9LS
Tel +44 344 626 0133
Fax +44 344 626 0143
Mail sales@dometic.co.uk

EXPORT

Dometic Competence Center
In der Steinwiese 16
D - 57074 Siegen, Germany
Tel +49 (0) 271 692 121
Mail lodging.export@dometic.com

TURKEY

ENTA A. S.

Gümüşsuyu Mah. İnönü Cad.
Taksim / Beyoğlu / İstanbul
Tel +90 212 292 89 00
Mail info@entaturk.com

GREECE

SAMARAS

Anaximandrou 73
54250 Thessaloniki
Tel +30 231 032 1091
Mail polief96@otenet.gr

KENYA & EAST AFRICA

SANDEN INTERCOOL

28 The Crescent Road
Nairobi
Tel +254 (0) 727 726 336
Mail purity.simiyu@sandenintercool.co.ke

RUSSIA

MIKO

Leningradskiy pr. 30/2
125040 Moscow
Tel +7 495 651 09 45
Mail officemoscow@miko-hotelservices.com