

*At your Service.*

**PROSAFE**  
Product overview 2014



### **Premium Class**

State-of-the-art security technology combined with innovative software solutions.



### **Advanced Class**

First-class security technology in timeless design.



### **Standard Class**

Excellent price-performance ratio and proven Dometic security technology.

At your Service	4
About Dometic	5
From Standard to Premium	6
Product finder	7
<b>Dometic Premium Class</b>	<b>8</b>
MD 282, MD 362, MD 382	10
MD 407, MD 432, MD 492	11
<b>Dometic Advanced Class</b>	<b>12</b>
MD 281, MD 361, MD 381, MD 406	14
MD 431, MD 491, MDD 401, MDT 400	15
<b>Dometic Standard Class</b>	<b>16</b>
310, MD 310, MD 390, MD 450	18
Dometic Anti-tampering system	19
Remote Emergency Opening System	20
Premium Audit	21
Product overview	22



# At your Service.

Individual, discreet and available at any time – service has many faces, but only one aim: generating a special kind of all-round comfort. The possibilities offered by Dometic proSafes make good service even better. They make room for extra comfort and enhance the individual character of the interior.

A proSafe from Dometic never clocks off; it continually offers additional security and protection for your guests' valuables. Always available – 24 hours a day – it offers a protected space for individual use. Innovative in terms of

design and technology, a proSafe provides especially reliable operation. This means guests have the opportunity to use a system that they can always trust. In this way, you create hotel rooms that meet the demand for a protected space supported with proven and reliable quality. For added safety and a fully secured atmosphere of well-being. A demand that Dometic further enhances with its network of partners – over 100 around the globe.





## Our responsibility

### Sustainable and environmentally conscious

Protecting and maintaining the environment for generations to come is one of the most important challenges faced by modern society. We want our customers to be able to use our products with the highest levels of comfort and quality – but also with a clear sense of environmental awareness.

Our environmental work is therefore based on a comprehensive life cycle approach that includes development, production, use and disposal. Other important aspects include legal requirements, customer demands and future trends.

We always strive to minimise our effect on the environment, to optimise our use of resources and to strengthen the environmental awareness of our employees and business partners.



Further information can be found at  
[www.dometicgroup.com/sustainability](http://www.dometicgroup.com/sustainability)



## From Standard to Premium

### The range of Dometic proSafe models

Security is an essential requirement for hotel guests, and one of the main reasons for choosing or discarding a destination and a hotel. The Dometic GROUP, aware of this, is always developing and improving all of its products in order to meet the needs of customers.

The latest product innovation Dometic has launched is a proSafe range which goes one step further in terms of design, functionality, technology and security. This pro-Safe range has a very modern design with a 1.77" TFT colour display, an illuminated keypad, multiple languages, the latest anti-tampering system and a new Web site platform which offers the possibility to operate the safe with the strictest security. The elegant cabinets of the new proSafe generation have rounded corners and edges for enhanced safety.

- Contemporary design
- 1,77" TFT display
- Master key with anti-tampering system
- Audit system – unique in the industry
- Enhanced Remote Emergency Opening System (REOS 2.0) – ultimate security and user comfort
- ADA-compliant illuminated keypad
- Battery level check
- Microfibre beige carpet



Laser-cut doors guarantee minimal clearance and top security.



Optimal comfort thanks to optional LED illumination.



Modern 1.77" TFT colour display and illuminated keypad.

# Product finder

The quick way to find the right product

What's important to you?	Easy operation	Motorised opening	LED display	TFT display	Emerg. opening with master key	Emerg. opening mit master code	Emerg. opening with REOS Code	Anti-Tamper System	Premium Audit	Laser-cut door	From Page
<b>Premium Class</b>											
	●	●	-	●	●	●	●	●	●	●	8
<b>Advanced Class</b>											
	●	●	●	-	●	●	○	○	○	●	12
<b>Standard Class</b>											
	●	●	●	-	●	●	-	-	○	-	16

● Yes / - No / ○ Optional

## Laser-cut door

Our doors are precisely cut and crafted by laser beam. This allows us to achieve 100% accuracy in dimensions and an extremely small clearance between the door and casing, making the door impossible to pry open.

## Anti-Tamper system

With the anti-tampering system, Dometic offers a unique security feature for their models. All anti-tampering manipulation attempts are recorded in the electronic of the safe and can be tracked back at any time. The Anti-Tampering System is comprised of two different Anti-Tampering options: Anti-Tampering System – Master Key, and Anti-Tampering System – Back cover. The Anti-Tampering System – Master Key is standard for the Premium models, and not available for the Advanced and Standard models. The Anti-Tampering System – Back cover is optional for the Premium and Advanced models, and not available for the Standard models.

## REOS code

REOS stands for Dometic's Remote Emergency Opening System. The emergency-opening system from Dometic is based on an innovative encoding system. The unique solution combines advanced electronics with state-of-the-art online technology to allow simple yet highly secure emergency opening by authorised hotel staff.

## TFT display

The 1.77" TFT displays and illuminated control panel offer guests additional convenience and come as standard with all Premium Class models. The instructions on the display are multilingual and can be set individually.

## Premium Audit

All operations effected on a safe must be documented – for your own security and for your insurance provider. This is where Dometic's Premium Audit system offers a truly convenient solution: the integrated microchip provides storage capacity for the last 1,000 events.

## SAM

The unique Dometic safe management system (SAM) includes all the security features of REOS, the anti-tampering system and Premium Audit. All essential elements of SAM come as standard with Premium Class models and can be optionally configured for Advanced Class models.







## The Premium Class from Dometic

Safe to say it's more convenient

Protection for more privacy – comfortably and with absolute reliability. With a Premium Class proSafe, a hotel room becomes a completely individual haven for its guest. A safe place for storage, conceived and implemented according to the newest standards. Its innovative and customisable design suits every hotel in a stylish way. Smooth surfaces and rounded edges make it easy to look after and give it long-lasting character. A 1.77" TFT colour display and the integrated illuminated soft-

touch keypad make operation easy. And a Premium Class proSafe also breaks new ground when it comes to protective properties: pioneering technology like the globally unique iAudit and the anti-tampering system ensure comprehensible security on all levels. The demand for contemporary security systems with added convenience is supported by special features such as REOS 2.0 software with its emergency-opening system.

HIGHEST SECURITY // EXCELLENT DESIGN // INNOVATIVE

- World first: brilliant 1.77" TFT colour display
- Display available in six different languages
- Laser-cut door and frame
- Audit
- Emergency opening with key and master code
- Anti-tampering system
- Innovative safe management (SAM)

# proSafe Premium

## Product overview



Model	MD 282	MD 362	MD 382	
Type of product	Electronic safe	Electronic safe	Electronic safe	
Capacity (litres)	8.2	24	28	
Exterior dimensions (H × W × D, mm)	165 × 280 × 235	190 × 360 × 410	190 × 380 × 450	
Interior dimensions (H × W × D, mm)	162 × 277 × 185	187 × 357 × 360	187 × 377 × 400	
Steel thickness (mm)	Door: 5.0 / Body 1.2	Door: 5.0 / Body 1.5	Door: 5.0 / Body 1.5	
Net weight (kg)	5.9	10	11.1	
Keypad	Illuminated ADA-compliant rubber keypad			
Display	1.77" TFT colour display; 4-digit guest code; English language			
Locking mechanism	Two 18 mm solid steel bolts			
Locking system	Motorised with automatic opening			
Power	4 LR6/AA 1.5 V batteries (incl.)			
Interior carpet	Microfibre, beige			
Cabinet colour	Anthracite grey, white or brown			
Front panel colour	Glossy black			
<b>Features</b>				
Battery	Low-battery warning			
Battery status	Low voltage (graphical and numerical)			
Confirmation buzzer	■	■	■	
Spring opening door	■	■	■	
Reprogrammable configuration	■	■	■	
<b>Security</b>				
Emergency opening (master key)	High-security master key with anti-tampering code			
Emergency opening (SAM)	REOS 2.0			
Audit system	Premium Audit (last 1,000 events)			



MD 407	MD 432	MD 492
Electronic safe	Electronic safe	Electronic safe
22.5	28.7	29
190 × 405 × 350	190 × 430 × 410	190 × 490 × 370
187 × 402 × 300	187 × 427 × 360	187 × 487 × 320
Door: 5.0 / Body 1.5	Door: 5.0 / Body 1.5	Door: 5.0 / Body 1.5
10.2	11.6	12.2
Illuminated ADA-compliant rubber keypad		
1.77" TFT colour display; 4-digit guest code; English language		
Two 18 mm solid steel bolts		
Motorised with automatic opening		
4 LR6/AA 1.5 V batteries (incl.)		
Microfibre, beige		
Anthracite grey, white or brown		
Glossy black		
Low-battery warning		
Low voltage (graphical & numerical)		
■	■	■
■	■	■
■	■	■
High-security master key with anti-tampering code		
REOS 2.0		
Premium Audit (last 1,000 events)		

Options  
(available for all models)

- Left-handed hinge door opening
- Custom colour (cabinet and front panel)
- 6-digit master code
- Integrated socket (EU, US, UK, FR)
- Fixing kit
- Rental system software
- Interior LED light
- Handle
- Anti-tampering system – back cover
- Languages display (standard: English): ES, FR, DE, SE, PT
- 120–240 V mains operation



■ Yes / – No





## The Advanced Class from Dometic

### Reliable quality for better protection

With an Advanced Class proSafe, safe storage of personal objects becomes an individual element of hotel service. With a modern, contemporary design and features, a room safe from Dometic looks good from any angle. Its modern feel with rounded edges and an integrated keypad creates a stylish surface with protective characteristics. The proSafe Advanced Class has a wide range of models to choose from, but is always a

good choice in terms of high quality standards. For example, it comes with battery warning, master code and master key emergency opening. All of which makes a proSafe from Dometic an essential element of your hotel in security terms – one you and your guests can rely on.

ROBUST SECURITY // TIMELESS DESIGN // LONG-LASTING QUALITY

- Laser cut technology: minimal clearance
- Intuitive, user-friendly operation
- Emergency opening via master key or master code
- Drawer-style and top-opening safes
- Optional Premium Audit function recalling the last 1,000 events

# proSafe Advanced

## Product overview



Model	MD 281	MD 361	MD 381	MD 406
Type of product	Electronic safe	Electronic safe	Electronic safe	Electronic safe
Capacity (litres)	8.2	24	28	22.5
Exterior dimensions (H × W × D, mm)	165 × 280 × 235	190 × 360 × 410	190 × 380 × 450	190 × 405 × 350
Interior dimensions (H × W × D, mm)	162 × 277 × 185	187 × 357 × 360	187 × 377 × 400	187 × 402 × 300
Steel thickness (mm)	Door: 5.0 / Body 1.2	Door: 5.0 / Body 1.5	Door: 5.0 / Body 1.5	Door: 5.0 / Body 1.5
Net weight (kg)	6.1	10.2	11.3	10.4
Keypad	ADA-compliant rubber keypad			
Display	LED 4-digit guest code			
Locking mechanism	Two 18 mm solid steel bolts			
Locking system	Motorised with automatic opening			
Power	4 LR6/AA 1.5 V batteries (incl.)			
Inside carpet	Grey			
Cabinet colour	Anthracite grey (NCS 8502)			
Labels	Glossy black			
<b>Features</b>				
Battery	Low-battery warning			
Confirmation buzzer	■	■	■	
Spring opening door	■	■	■	
Reprogrammable configuration	■	■	■	
<b>Security</b>				
Emergency opening (master key)	High-security master key			
Emergency opening (master code)	Included			
Audit system	Not included (optional)			



MD 431	MD 491	MDD 401	MDT 400
Electronic safe	Electronic safe	Electronic safe	Electronic safe
28.7	29	15.7	10
190 × 430 × 410	190 × 490 × 370	200 × 400 × 440	125 × 400 × 350
187 × 427 × 360	187 × 487 × 320	135 × 315 × 370	73 × 396 × 346
Door: 5.0 / Body 1.5	Door: 5.0 / Body 1.5	Door: 5.0 / Body 2	Door: 5.0 / Body 2
11.8	12.4	22.8	13.7
ADA-compliant rubber keypad			
LED 4-digit guest code			
Two 18 mm solid steel bolts			
Motorised with automatic opening			
4 LR6/AA 1.5 V batteries (incl.)		4 LR14/C 1.5 V batteries (incl.)	
Grey			
Anthracite grey (NCS 8502)			
Glossy black			
Low-battery warning			
■	■	■	■
■	■	■	■
■	■	■	■
High-security master key			
Included			
Not included (optional)		Premium Audit (last 1,000 events)	

Options
MD 281 to MD 491
<ul style="list-style-type: none"> <li>■ Left-handed hinge door opening</li> <li>■ Custom colour</li> <li>■ Integrated socket (EU, US, UK, FR)</li> <li>■ Fixing kit</li> <li>■ Rental system software</li> <li>■ Interior LED light</li> <li>■ Handle</li> <li>■ Anti-tampering system – back cover</li> <li>■ 220 V mains operation</li> <li>■ Emergency opening with REOS code (SAM)</li> <li>■ Premium iAudit (last 1,000 events)</li> </ul>
MDD 401
<ul style="list-style-type: none"> <li>■ Custom colour</li> <li>■ Custom label</li> <li>■ Fixing kit</li> <li>■ Rental system software</li> <li>■ Stainless-steel front panel</li> </ul>
MDT 400
<ul style="list-style-type: none"> <li>■ Custom colour</li> <li>■ Custom label</li> <li>■ Integrated socket (EU, US, UK, FR)</li> <li>■ Fixing kit</li> <li>■ Rental system software</li> <li>■ Interior LED light</li> <li>■ Handle</li> </ul>

■ Yes / – No





## The Standard Class from Dometic

### Security that pays off

Providing a secure space for important or valuable objects doesn't have to be cost-intensive. With a Standard Class proSafe, you can create a reliable spot within a hotel room that is worth every penny. Security and functionality are paramount in all models of Dometic safe. The Standard Class entry-level models offer your guests a high level

of security thanks to their robust construction and notably improve convenience for guests with simple and intuitive operability.

ECONOMICAL // SIMPLEST TO USE // RELIABLE

- New glossy control panel
- LED Display
- Master key and master code emergency opening
- Optionally with integrated socket

# proSafe Standard

## Product overview



Model	310	MD 310	MD 390	MD 450
Type of product	Mechanical safe	Electronic safe	Electronic safe	Electronic safe
Capacity (litres)	9	9	31.5	30.4
Exterior dimensions (H × W × D, mm)	165 × 310 × 235	165 × 310 × 235	200 × 390 × 470	200 × 450 × 400
Interior dimensions (H × W × D, mm)	161 × 306 × 182	161 × 306 × 182	196 × 386 × 418	196 × 446 × 348
Steel thickness (mm)	Door: 5.0 / Body 2	Door: 5.0 / Body 2	Door: 5.0 / Body 2	Door: 5.0 / Body 2
Net weight (kg)	7.4	7.7	14.3	14.5
Keypad	–	Rubber keypad		
Display	–	LED 4-digit guest code		
Locking mechanism	Two 19 mm solid steel bolts			
Locking system	Mechanical, with key		Motorised with automatic opening	
Power	–	4 LR6/AA 1.5 V batteries (incl.)		
Inside carpet	Grey			
Cabinet colour	Anthracite grey (NCS 8502)			
Front panel colour	–	Glossy black		
<b>Features</b>				
Confirmation buzzer	–	■	■	■
<b>Security</b>				
Emergency opening	Master key		High-security master key and master code	
<b>Options</b>				
	<ul style="list-style-type: none"> <li>■ Left-handed hinge</li> <li>■ Fixing kit</li> </ul>	<ul style="list-style-type: none"> <li>■ Left-handed hinge</li> <li>■ Fixing kit</li> <li>■ Audit trail</li> </ul>	<ul style="list-style-type: none"> <li>■ Left-handed hinge</li> <li>■ Integrated socket (EU, US, UK)</li> <li>■ Fixing kit</li> <li>■ Audit trail</li> </ul>	<ul style="list-style-type: none"> <li>■ Left-handed hinge</li> <li>■ Integrated socket (EU, US, UK)</li> <li>■ Fixing kit</li> <li>■ Audit trail</li> </ul>

■ Yes / – No

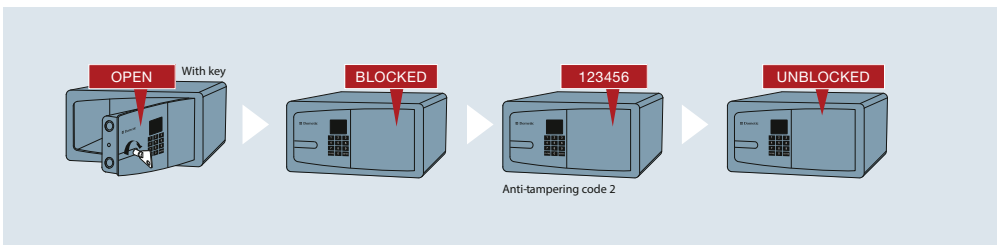


# Dometic anti-tampering system

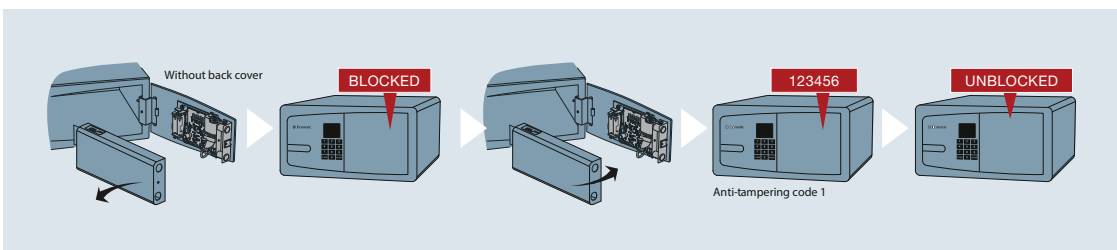
The quality benchmark for hotel safe security

While hotel guests around the world expect efficient and secure service to store their valuables in their own hotel rooms, hotel managers demand cutting-edge technology to guarantee smooth and reliable in-room safe operation. The latest Dometic proSafe range offers state-of-the-art solutions for every demand. With the Anti-tampering system, Dometic provides an unparalleled security feature for its proSafe models. The anti-tampering system reports to the hotel any

tampering attempt performed on the safe at any given time of day or night. The state-of-the-art security concept will even better protect the guests' valuables. Integrated in a sturdy cabinet with 18 mm steel pivots, it leaves no point of attack for thieves and burglars. Dometic strives to support your hotel's most thorough security standards and guarantee your guests the greatest possible comfort away from home.



Master key with anti-tampering System



Back cover with anti-Tampering System



## Remote Emergency Opening System



High-security features and proSafe specials

Dometic offers three emergency-opening options.

**Option 1:** Authorised staff open the safe with a master key.

**Option 2:** Authorised staff enter a master code to open the safe.

After ten seconds the safe will open automatically.

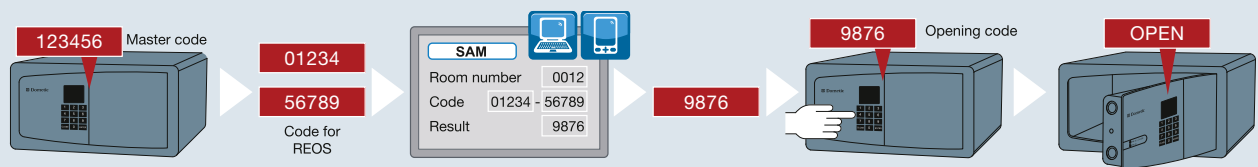
**Option 3:** The REOS system, designed for ultimate security and user comfort.

### REOS – takes hotel safe security to a higher level

The Dometic Remote Emergency Opening System is based on an innovative encryption system. This unique solution combines the advanced electronic system integrated in all proSafe MD models with the latest online technology. In case of emergency, an authorised staff member enters the REOS code on the safe's keypad. As a result, the safe generates a ten-digit code to be entered on a password-protected Web page. The screen finally shows the emergency access code which can be used to open the safe. Each REOS opening is recorded and stored on a protected server.

### REOS – convenient data entry by mobile phone

Latest generation REOS software saves time for hotel guests and staff members. The ten-digit code, generated by the safe upon entry of the master code can now optionally be keyed in by mobile phone on the password-protected Web page. Another smart Dometic solution for enhanced service quality.



Three easy steps to secure emergency opening: mastercode – one 10-digit code – opening code



# Premium Audit

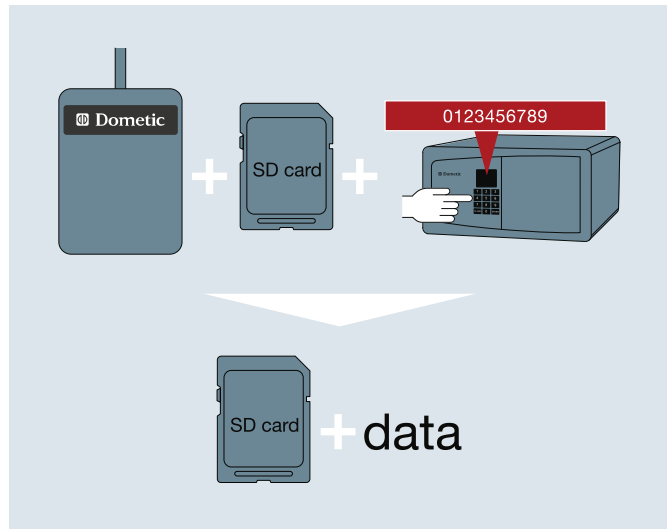
The digital memory for audit trails



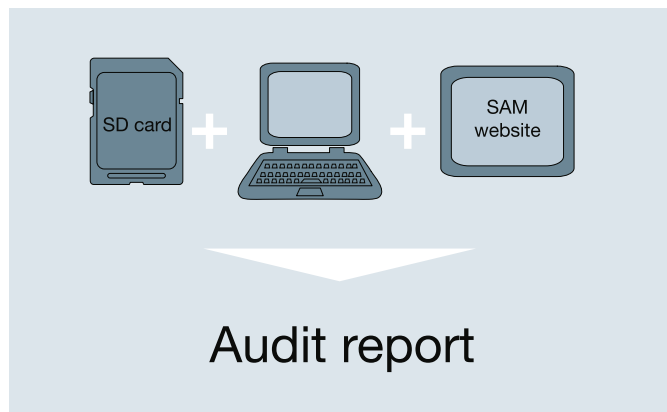
All operations effected on a safe must be documented – for your own security and for your insurance provider. This is where Dometic’s Premium Audit system offers a truly convenient solution.

All proSafe MD models from the Advanced and Premium range feature a special microchip with storage capacity for the last 1,000 events. That means: any operation (locking, unlocking, emergency-opening requests, etc.) can be tracked and audited at any time – even over a number of years. The information is transferred from the safe to a protected server via the Dometic SD card device, which works with common SD cards.

All proSafe MD models from the Advanced and Premium range have a matching interface for connection to the SD card reader. The audit protocol can be printed out at any time, simply by using your PC’s printer. This avoids the need for special audit trail printers.



Step 1



Step 2



Easy to operate: the Dometic SD card device for audit data transfer from safe to server

**Audit Dometic**

Nº Audit: 1619  
 Date GTM: 29/06/2012  
 Time GTM: 14:07:29  
 Safe Date: 29/06/2012 0:00:00  
 Safe Time: 13:30  
 Company: Dometic Girona  
 Location: Girona  
 Room Number: 1234  
 Requested by: Nuria Bergada  
 Nº product: 958480610  
 Nº Serial: 222000560  
 Total Audit operations: 57  
 Total print operations: 50

Last 5 emergency operations		
Emergency date	Emergency time	Emergency operation
26/06/2012	09:45	Master code opening
26/06/2012	09:44	Master code opening
22/06/2012	10:07	Open and close with key
22/06/2012	09:58	Open and close with key
22/06/2012	09:52	Open and close with key

Movements of the box			
Normal date	Normal time	Normal operation	Operation
21/06/2012	12:17	Opening OK	Opening OK
21/06/2012	12:14	Closing OK	Closing OK
21/06/2012	12:14	Reprogram safe	Reprogram safe
21/06/2012	12:13	Opening OK	Opening OK
21/06/2012	12:13	Closing OK	Closing OK
21/06/2012	12:13	Reprogram safe	Reprogram safe
21/06/2012	12:12	Master code opening	Master code opening
21/06/2012	12:12	Wrong code	Wrong code
21/06/2012	12:12	Change of master code	Change of master code

Recommendable for security and insurance reasons: Premium Audit for up to 1,000 events

Product Line	Model	Capacity litres	Exterior dimensions Height x Width x Depth, mm	Interior dimensions Height x Width x Depth, mm	Net weight kg	Steel thickness mm	Locking mechanism
<b>Premium Class</b>							
	MD 282	8.2	165 x 280 x 235	162 x 277 x 185	5.9	Door: 5.0 / Body 1.2	Two 18 mm solid steel bolts
	MD 362	24	190 x 360 x 410	187 x 357 x 360	10	Door: 5.0 / Body 1.5	Two 18 mm solid steel bolts
	MD 382	28	190 x 380 x 450	187 x 377 x 400	11.1	Door: 5.0 / Body 1.5	Two 18 mm solid steel bolts
	MD 407	22.5	190 x 405 x 350	187 x 402 x 300	10.2	Door: 5.0 / Body 1.5	Two 18 mm solid steel bolts
	MD 432	28.7	190 x 430 x 410	187 x 427 x 360	11.6	Door: 5.0 / Body 1.5	Two 18 mm solid steel bolts
	MD 492	29	190 x 490 x 370	187 x 487 x 320	12.2	Door: 5.0 / Body 1.5	Two 18 mm solid steel bolts
<b>Advanced Class</b>							
	MD 281	8.2	165 x 280 x 235	162 x 277 x 185	6.1	Door: 5.0 / Body 1.2	Two 18 mm solid steel bolts
	MD 361	24	190 x 360 x 410	187 x 357 x 360	10.2	Door: 5.0 / Body 1.5	Two 18 mm solid steel bolts
	MD 381	28	190 x 380 x 410	187 x 377 x 400	11.3	Door: 5.0 / Body 1.5	Two 18 mm solid steel bolts
	MD 406	22.5	190 x 405 x 350	187 x 402 x 300	10.4	Door: 5.0 / Body 1.5	Two 18 mm solid steel bolts
	MD 431	28.7	190 x 430 x 410	187 x 427 x 360	11.8	Door: 5.0 / Body 1.5	Two 18 mm solid steel bolts
	MD 491	29	190 x 490 x 370	187 x 487 x 320	12.4	Door: 5.0 / Body 1.5	Two 18 mm solid steel bolts
	MDD 401	15.7	200 x 400 x 440	135 x 315 x 370	22.8	Door: 5.0 / Body 2	Two 18 mm solid steel bolts
	MDT 400	10	125 x 400 x 350	73 x 396 x 346	13.7	Door: 5.0 / Body 2	Two 18 mm solid steel bolts
<b>Standard Class</b>							
	310	9	165 x 310 x 235	161 x 306 x 182	7.4	Door: 5.0 / Body 2	Two 19 mm solid steel bolts
	MD 310	9	165 x 310 x 235	161 x 306 x 182	7.7	Door: 5.0 / Body 2	Two 19 mm solid steel bolts
	MD 390	31.5	200 x 390 x 470	196 x 386 x 418	14.3	Door: 5.0 / Body 2	Two 19 mm solid steel bolts
	MD 450	30.4	200 x 450 x 400	196 x 446 x 348	14.5	Door: 5.0 / Body 2	Two 19 mm solid steel bolts

Product Line	Model	Laptop size	Premium Audit	REOS	Anti-tampering System	TFT display	LED display	Masterkey emergency opening
<b>Premium Class</b>								
	MD 282	-	■	■	■	■	-	■
	MD 362	15"	■	■	■	■	-	■
	MD 382	17"	■	■	■	■	-	■
	MD 407	15"	■	■	■	■	-	■
	MD 432	15"	■	■	■	■	-	■
	MD 492	17"	■	■	■	■	-	■
<b>Advanced Class</b>								
	MD 281	-	Optional	Optional	Optional	-	■	■
	MD 361	15"	Optional	Optional	Optional	-	■	■
	MD 381	17"	Optional	Optional	Optional	-	■	■
	MD 406	15"	Optional	Optional	Optional	-	■	■
	MD 431	15"	Optional	Optional	Optional	-	■	■
	MD 491	17"	Optional	Optional	Optional	-	■	■
	MDD 401	15"	■	■	-	-	■	■
	MDT 400	15"	■	■	-	-	■	■
<b>Standard Class</b>								
	310	-	-	-	-	-	-	■
	MD 310	-	-	-	-	-	■	■
	MD 390	17"	-	-	-	-	■	■
	MD 450	15"	-	-	-	-	■	■

■ Yes / - No



The Dometic Group is a customer-orientated, worldwide-leading manufacturer of innovative comfort products for the caravan, lorry, car and boat markets. The corporate group serves industry clients and the after-market with a complete range encompassing air conditioners, cooling appliances, awnings, lighting systems, cookers, deluxe toilets and hygiene equipment, mobile power supply products, comfort and safety solutions, doors, windows and many other products – all designed to bring comfort and convenience to people on the move. Furthermore, the Dometic Group supplies workshop equipment for the maintenance and repair of vehicle air conditioners.

The Dometic Group is the current market leader for special refrigerators for hotels, offices and medical facilities, as well as customised wine refrigerators.

Dometic Group products are sold in almost 100 countries around the globe and are mainly manufactured in proprietary production plants.



[www.dometic.com/lodging](http://www.dometic.com/lodging)

**Discover the new  
Dometic wine cellars,  
wine refrigerators  
and miniBar range.**

Request  
a free  
catalogue  
now!



*At your Service.*

You can find the addresses of all the sales companies and distributors at:

[www.dometic.com/lodgingsupport](http://www.dometic.com/lodgingsupport)

**NETHERLANDS**

**Dometic Benelux B.V.**

Ecustraart 3  
NL-4879 NP Etten-Leur  
Tel +31 76 5029000  
Fax +31 76 5029019  
Mail [info@dometic.nl](mailto:info@dometic.nl)

**BELGIUM**

**Dometic Branch Office Belgium**

Zinkstraat 13  
B-1500 Halle  
Tel +32 2 3598040  
Fax +32 2 3598050  
Mail [info@dometic.be](mailto:info@dometic.be)

**DENMARK**

**Dometic Denmark A/S**

Nordensvej 15, Taulov  
DK-7000 Fredericia  
Tel +45 75585966  
Fax +45 75586307  
Mail [info@dometic.dk](mailto:info@dometic.dk)

**FINLAND**

**Dometic Finland OY**

Mestarintie 4  
FIN-01730 Vantaa  
Tel +358 20 7413220  
Fax +358 9 7593700  
Mail [info@dometic.fi](mailto:info@dometic.fi)

**GERMANY**

**Dometic GmbH**

In der Steinwiese 16  
57074 Siegen  
Tel +49 271 692 0  
Fax +49 271 692 302  
Mail [info@dometic.de](mailto:info@dometic.de)

**ITALY**

**Dometic Italy S.r.l.**

Via Virgilio, 3  
I-47122 Forlì (FC)  
Tel +39 0543 754901  
Fax +39 0543 754982  
Mail [vendite@dometic.it](mailto:vendite@dometic.it)

**NORWAY**

**Dometic Norway AS**

Østerøyveien 46  
N-3232 Sandefjord  
Tel +47 33428450  
Fax +47 33428459  
Mail [firmapost@dometic.no](mailto:firmapost@dometic.no)

**POLAND**

**Dometic Poland Sp. z o.o**

ul. Puławska 435A  
PL-02-801 Warszawa  
Tel +48 22 414 3200  
Fax +48 22 414 3201  
Mail [info@dometic.pl](mailto:info@dometic.pl)

**PORTUGAL**

**Dometic Spain, S.L.**

**Sucursal em Portugal**  
Beloura Business Center  
Rua dos Navegantes, Bloco 3, 1ªA  
2710-297 Sintra  
Tel +351 219 244 173  
Fax +351 219 243 206  
Mail [info@dometic.pt](mailto:info@dometic.pt)

**RUSSIA**

**Dometic RUS LLC**

Komsomolskaya square 6 – 1  
RU-107140 Moscow  
Tel +7 495 780 79 39  
Fax +7 495 916 56 53  
Mail [info@dometic.ru](mailto:info@dometic.ru)

**SOUTH AFRICA**

**Dometic (Pty) Ltd.**

**Regional Office**  
**South Africa & Sub-Saharan Africa**  
P.O. Box 2562  
2008 Bedfordview  
Tel +27 11 4504978  
Fax +27 11 4504976  
Mail [info@dometic.co.za](mailto:info@dometic.co.za)

**SPAIN**

**Dometic Spain S.L.**

Avda. Sierra del Guadarrama, 16  
E-28691 Villanueva de la Cañada  
Madrid  
Tel +34 902 111 042  
Fax +34 900 100 245  
Mail [info@dometic.es](mailto:info@dometic.es)

**SWEDEN**

**Dometic Scandinavia AB**

Gustaf Melins gata 7  
S-421 31 Västra Frölunda  
Tel +46 31 7341100  
Fax +46 31 7341101  
Mail [info@dometic.se](mailto:info@dometic.se)

**UNITED ARAB EMIRATES**

**Dometic Middle East FZCO**

P.O. Box 17860  
S-D 6, Jebel Ali Freezone  
Dubai  
Tel +971 4 883 3858  
Fax +971 4 883 3868  
Mail [info@dometic.ae](mailto:info@dometic.ae)

**UNITED KINGDOM**

**Dometic UK Ltd.**

Dometic House, The Brewery,  
Blandford St. Mary  
Dorset DT11 9LS  
Tel +44 125 841 4581  
Fax +44 844 626 0143  
Mail [lodging@dometic.co.uk](mailto:lodging@dometic.co.uk)